

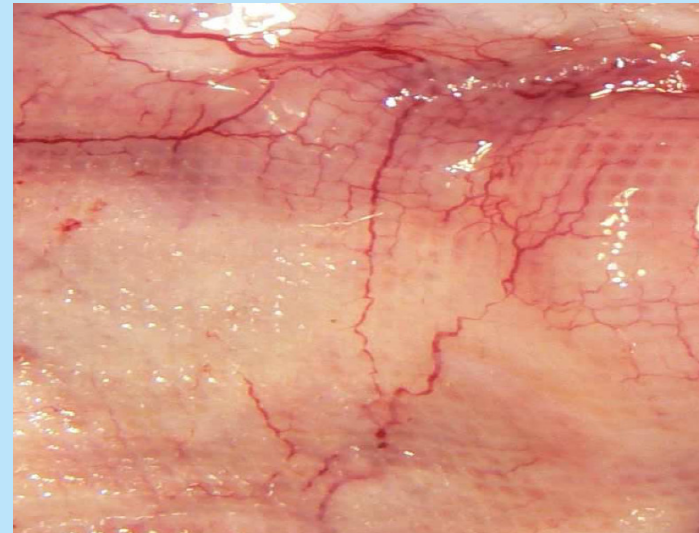
Titanized Polypropylene

- Optimized tissue integration due to titanization
(Vital reaction)



Source: Prof. Köckerling, Hannover

High body acceptance and
optimized tissue integration

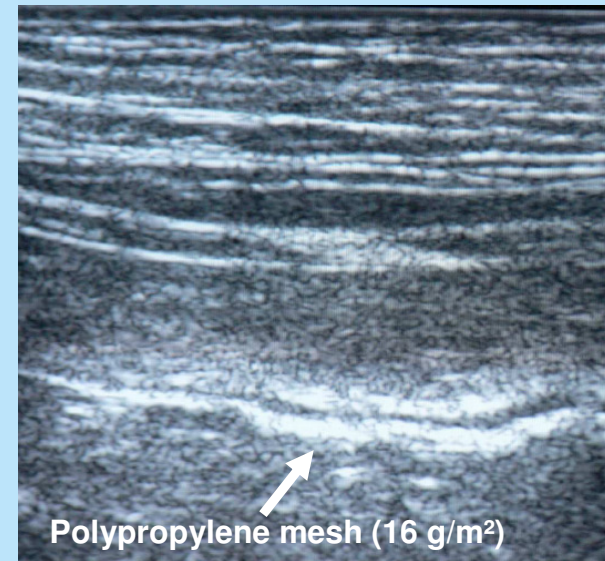
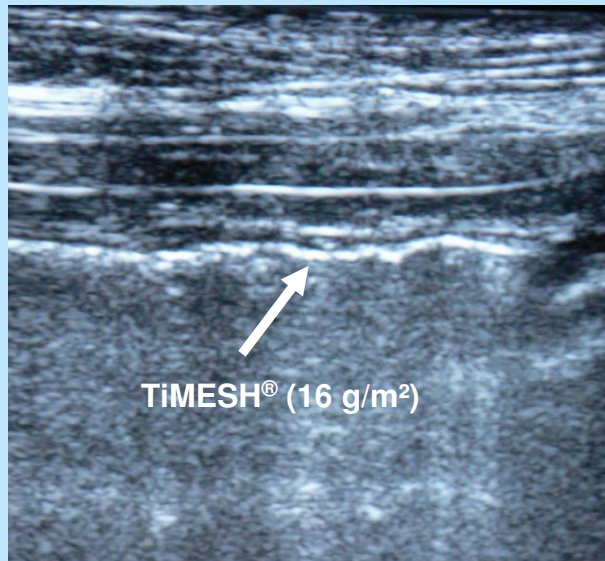


Source: Charité Berlin

Already after 12 weeks developing of
small vessels

Titanized Polypropylene

- Optimized tissue integration due to titanization
(Toxic Reaction)



Inflammatory reaction on non-coated PP mesh (right)
after 16 days seen in ultrasound